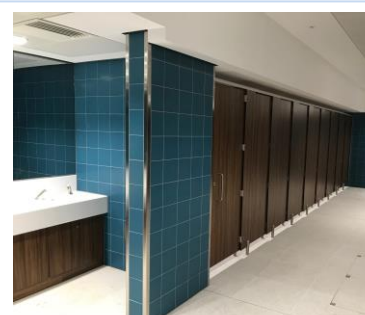
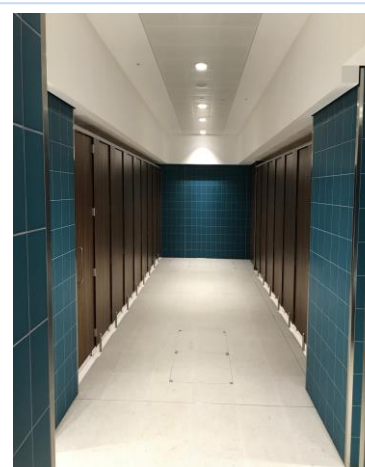


Waterloo International Toilet Core London SE1



Client	Skanska	Undertaking works to toilet core fitting out to form the new toilet core within the public domain at the prestigious Waterloo International Station re arrangement.
MC	Wessex Capacity Alliance	
Architect	Aecom	
Engineer	Mott McDonald	
Value	£400K	
Date	2018 / 2019	
Package	Fit out works	